



Smart Biomaterials for Life Sciences and Medical Applications

MAPTriX HyGel™ Line of Products

Chemically Well-Defined Hydrogel Products for 3D Cell Culture Applications



MAPTriX HyGel™ is a recombinant mussel adhesive protein based, semi-synthetic 3D extracellular matrix that is tailored to mimic specific ECM (extracellular) properties. The MAPTriX HyGel™ hydrogel products are composed of two components: MAPTriX™ ECM, a mussel adhesive protein based extracellular matrix (ECM) mimetic; and, MAPTriX™ Link, a multi-arm polyethylene glycol derivative. Use of MAPTriX HyGel™ generates a well controlled and reproducible cellular environment for 3D cell culture and related applications. MAPTriX HyGel™ is an innovative and versatile 3D cell culture tool that addresses the unmet needs of a chemically and physically defined matrix for cell culture & related applications.

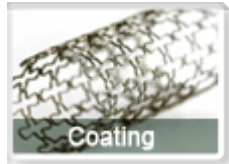
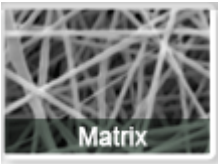
Features & Benefits

- The *in situ* creation of a fully-defined
 - 3D extracellular matrix
 - Free of animal derived components
 - Readily able to engineer the elasticity and/or pore size of the hydrogel by adjusting the concentration of MAPTriX™ ECM or MAPTriX™ Linker
- User-friendly, ready-to-use formulation for the end-user
 - All components of MAPTriX HyGel™ are stable and can be stored in a refrigerator, no deep-freezing is required
 - Simply mixing each component can form a hydrogel within two hours, under physiological conditions
 - All components are soluble in most buffer solutions
 - MAPTriX HyGel™ is compatible with existing cell culture protocols
- High lot-to-lot consistency and reproducibility
 - High batch-to-batch reproducibility between samples and vials
 - QC & QA testing in accordance with current USP Guidelines

The MAPTriX HyGel™ matrix can be modularly engineered for designed biochemical characteristics by use of either a single MAPTriX™ ECM product or a combination of MAPTriX™ ECM products. Kollodis currently provides many different MAPTriX™ ECM products in its expanding MAPTriX™ ECM line of products for engineering the extracellular matrix.

Kollodis BioSciences' Mussel Adhesive Protein based matrix (MAPTriX™) ECM line of products are coating reagents with genetically incorporated bioactive peptides (recognition peptides) which mimic the extracellular matrix (ECM) activity of collagen (MAPTriX™ C), fibronectin (MAPTriX™ F), laminin (MAPTriX™ L), vitronectin (MAPTriX™ V), cadherin (MAPTriX™ E), and heparin (MAPTriX™ H) proteins.

For more info, visit Kollodis BioSciences, Inc. at www.kollodis.com



Kollodis' MAPTriX™ products are for research use only & are not intended for diagnostic or clinical use.